

Schäffer

THE PERFORMANCE CLASS

2345 T | 3550 T |

5680 T | 6680 T | 8610 T

9630 T | 9660 T

THE SLT-CLASS:

LOW STYLE LOADER

2345 T SLT | 3550 T SLT



TELESCOPIC LOADERS: Performance re-defined

YARD LOADERS, WHEEL LOADERS AND TELESCOPIC LOADERS.

from 20 hp (15 kW) to 157 hp (115 kW). At Schäffer Loaders, we have a proud 50 year history of creating loaders for individual requirements. Our customers have made us what we are today: one of the world's most competitive and successful suppliers of yard loaders, wheel loaders and telescopic loaders. Every day our team creates new custom solutions that combine years of experience with a spirit of innovation. Our products set industry standards for reliability and durability, which means you save with lower servicing costs over the life of your machine. The Schaffer name is your assurance of superior performance, safety and comfort for years to come.

made by SCHÄFFER



SCHÄFFER TELESCOPIC LOADERS: THE FUTURE OF PERFORMANCE.

When it comes to articulated telescopic loaders, Schäffer machines are the most successful in their class. Precision performance on any terrain, with lifting heights and loads that you will not find in comparable machines from our competitors. The compact design, which is characteristic of all Schäffer loaders, makes them easy to use particularly in hard-to-reach areas, add to this the user friendly controls and you have the perfect material handling solution. All loaders have the renowned Schäffer reliability built in and our design engineers have also focused on styling so that machines look modern and purposeful.

THE PERFORMANCE CLASS

2345 T | 33 kW (45 HP)

3550 T | 37 kW (50 HP)

5680 T | 55 kW (75 HP)

9630 T | 90 kW (123 HP)

2345 T SLT | 33 kW (45 HP)

3550 T SLT | 37 kW (50 HP)

6680 T | 55 kW (75 HP)

9660 T | 115 kW (157 HP)

8610 T | 75 kW (102 HP)

SCHÄFFER TELESCOPIC LOADER 3550 T SLT: OVERALL HEIGHT 2.04 M ONLY

With an overall height of only 2.04 meters, the loaders cope with low passages without problems. The design-related deep center of gravity of the machines affects stability and also tipping loads in a positive way. The lifting height is 3.85 m. The combination of compact machine size, high maneuverability, excellent reach and lifting height makes the machines very versatile and unique.





2345 T: THE COMPACT TELE WHEEL LOADER BY SCHÄFFER

Compact tele wheel loaders can be used as universal working machines in all kinds of areas. Weighing 3 t, the tele wheel loader 2345 T is the perfect combination of strength, lifting height, range and manoeuvrability. With a far greater lifting height and range than normal compact wheel loaders, the 2345 T opens up a whole range of new uses.

The lifting height of the loader is 3.75 m, which makes it suitable for loading most HGVs with ease. No compromises have been made in terms of lifting capacity either. At up to 1.65 t, the tipping load is especially formidable, enabling load cycles which make a real impact. Their articulated steering makes the loaders extremely manoeuvrable. Manual work can often be mechanised where larger conventional tele wheel loaders or even large wheel loaders are simply too big and too hard to manoeuvre.



Schäffer



3550 T: THE COMPACT TELE WHEEL LOADER FOR THE HIGHEST STANDARDS

The 3550 T is always the right choice when it comes to thrust, compactness and lifting height. The newly designed HTF drive (High Traction Force) supplies enormous traction force. This is founded on the 480 bar of pressure in the drive system and improved hydraulic efficiency. Thanks to the automatic control, the full traction force is also available in the fast gear. The machine's maximum speed is 20 km/h, or optionally 30 km/h. Certification for road use is also possible for the high-speed version, if specified by the customer.

When it comes to their technical details, there is no need for Schäffer's most compact tele wheel loaders to cower in the face of the bigger models. Wear and maintenance-free Ferro-Form sliding elements in the telescopic boom, alongside the 7 t heavy-duty axles will ensure that your loader provides years of problem-free service. Both the articulated/ pendulum joint and the multiple disc brake in the oil bath are maintenance-free.

The engine power, 37 kW (50 HP) on the 3550 T, is also extremely good. This means the machines are very well powered even for challenging tasks, and offer more agility and greater driving fun.



KUBOTA MOTOR TECHNOLOGY ...

Schäffer has worked in partnership with Kubota, a leading manufacturer of compact diesel motors, for more than 25 years. Kubota has an unsurpassed reputation for quality all over the world. Even in freezing temperatures a Kubota motor will start with ease. You can sense safety and power in the way it sounds, and its excellent torque delivers exceptional performance. Forget maintenance problems – you can expect around 10,000 hours of trouble-free operation. Kubota motors are also exceptionally economical, fuel-efficient and environmentally friendly. A unique prechamber system means a motor can easily be converted to cold-pressed vegetable oil without the need for a separate diesel fuel tank. Kubota motors are future-proof!



Original Schäffer axles are adjusted 100% to each particular loader – that's the secret of their outstanding pushing power, as proved by independent tests. Safety is another important benefit of Schäffer axles. From model 3550 T, the permitted load bearing capacity is 7t per axle. All tele handlers are equipped with an oil-immersed, cap-suled, multi-disc brake. These are brakes you can always count on! Not only do they deliver optimal deceleration values, they are also totally maintenance-free. Dirt, dust and humidity don't stand a chance.

SCHÄFFER PIVOT STEERED TELE HANDLER SERIES 5680 T

The pivot steered tele handler 5680 T offer best comfort for long working days. Thanks to the generously sized cabin and the high seating position the driver's all round view is at its best in all directions. The windscreen is pulled up into the roof. Without the usual cross bar the view up is ideal. The driver is always working safely and productively. For pleasant noise level in the cabin the loaders have quiet-running diesel engines. The 5680 T has got a Deutz turbo engine with 55 kW (75 hp). So with relatively little effort even the strictest emission standards in this class are met. The hydrostatic drive combines the best controllability and highest pushing power. Since all components of the drive train are perfectly matched, the fuel is converted into power sparingly and effectively. The maximum lifting height is 4.25 m. Upon request, the loader will be delivered instead of the cabin with a protection roof.









6680 T: THE NEW MEASURE

With its working weight of 5.6 t to 6.3 t, the 6680 T is the smallest loader in the professional class. The loader is driven by a 55 kW (75 HP) Deutz turbo diesel engine of the latest generation. It uses a diesel oxidation catalyst that eliminates the need for a diesel particle filter. Because all the components in the hydrostatic drive are perfectly matched to each other, the fuel consumption is converted into performance economically and effectively. The thrust is also 20 % higher than that of its predecessor. The maximum driving speed is optionally up to 35 km/h, so even interplant uses can easily be handled. The eye-catching feature of this new machine is the new design of the rear section, which underscores the powerful dynamics of this vehicle.

The 6680 T is the smallest loader to use the "SCV" (Silence/ Comfort/ View) cabin. This vehicle sets new standards in its class in terms of driving ergonomics, space and all-round visibility. A higher version that provides the driver with an even better view is also available.

TELESCOPING LOADER 8610 T: COMPACT MACHINES WITH EXCELLENT ALL ROUND VIEW

These articulated telescopic loader have an operating weight 6,5 to 7,5 t and are positioned in the mid-sector of the telescopic loader range. The unique selling points of these machines are their agility, the compact design which allows them to be operated in confined areas and the new SCV cab. When the larger Schaffer are just too big, the 8610 T is the perfect solution. This machine is ideal for use in narrow passage ways and restricted head room.

The SCV-Cab: ROPS and FOPS approved; very spacious, best ergonomics and all round view.

4-cyl. Deutz Common Rail diesel engine.
Clean, moneysaving, powerful.
Clean diesel engine stage III B, without particulate filter.

Axles in HD version: Standard with planetary axle and automatic limited-slip differential. Best thrust (5.500 daN!!) through optimal setup of axle, hydrostatic drive and diesel engine. The oscillating rear axle, ameliorate the stability by 30%.

Extremely strong articulation joint.





The articulation joint is extremely heavy duty – you're unlikely to find a stronger one on the market.

THE SCHÄFFER 8610 T: ADVANTAGES AT A GLANCE

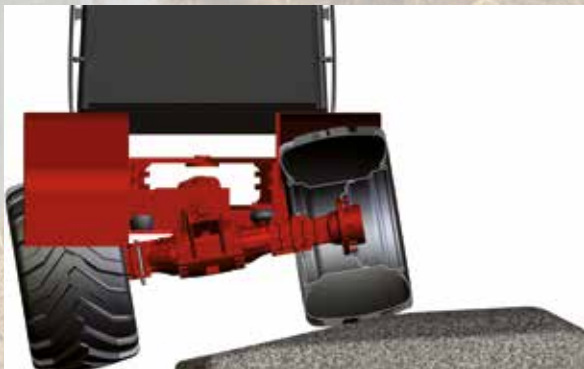


SCHÄFFER PIVOT STEER TELE HANDLER 8610 T

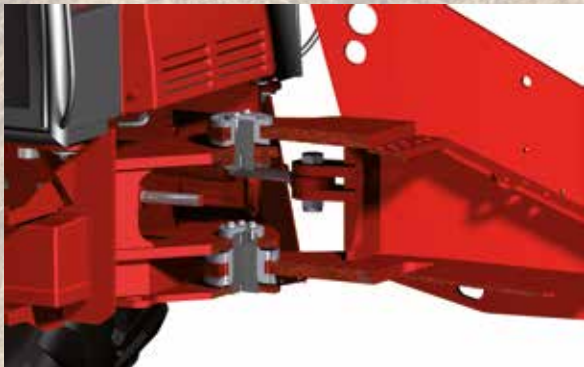
With the 7,5 t pivot steer wheel loader 8610 T offers a powerful machine. Diet feeders can be loaded quickly and effectively. Thanks to the extraordinary robustness of the 8610 T years of trouble-free operation are expected. The articulated steering makes the charger more agile than any front loader tractor. Due to the low height of the Schaeffer the loader completed his duties also there, where larger machines can't be used anymore. The SCV-cab provides a very low noise level. The water-cooled Deutz engine with 75 kW (102 hp) is very low on fuel. Since all components of the hydrostatic drive are perfectly matched, the fuel is economically and effectively transferred into performance.







For best stability the rear axle is oscillating. With optional suspension even more safe and comfortable.



The articulation joint is very strong and maintenance free.

SCHÄFFER 9630 T TELESCOPIC LOADERS : THE LOADER WITH ADDED VALUE

Here are only five features that make this loader added-value machines:

1. The driver has excellent all-round view due to the low boom pivot and the designed SCV cab. The driver can always see clearly in all directions.
2. The lift height of up to 5.30m is unique in the 8t class. With Schäffer you can reach higher and farther.
3. The oscillating rear axle contributes to the excellent stability of the machine. Good for safety when operating on rough terrain.
4. The tilt cylinder is protected within the telescopic boom, which helps prevent damage and wear to this otherwise vulnerable area.
5. The sliding elements in the telescopic boom are made from Ferroform- a special material that doesn't wear.

The 9630 T are our most popular telescopic loaders – but for more than just these 5 reasons!





NEW SCHÄFFER PIVOT STEER HANDLER 9660 T WITH 6.10 M LIFTING HEIGHT

The 9660 T is specially developed for the requirements of biogas plants and large scale farms and combines the good all round view and traction force of a standard wheel loader with the lifting height and reach of a conventional telescopic loader.

The Schäffer has an operating weight up to 13 tons. The tipping load is about 5.3 t. The lifting height of the 9660 T amounts to 6.10 m. The standard flow-sharing hydraulics provide up to 172 l/min. All hydraulic operations run very quickly also at low engine speed. As an option a load-sensing hydraulics is available.

If you are looking for a loader which will cope with the hardest conditions the 9660 T should be on top of your list.

Schäffer



NEW SCHÄFFER TELELOADER 9660 T WITH “SDCT” DRIVE

Schäffer's range of products in respect of teleloaders with articulated joints is the most extensive of the market. The 9660 T is the latest model, and with an operating weight up to 13 tons and a lifting height of 6.10 m, it occupies a very exclusive position in the market.

With “SDCT” the 9660 T reaches the next evolutionary stage. “SDCT” stands for Schäffer Dual Clutch Transmission. It is a double-clutch transmission that is used in connection with a hydro-static drive for the very first time. The advantages are quite obvious: the hydro-static drive is extremely easy and comfortable to handle. Together with the “SDCT” a traction force is achieved that could only be realised so far with much more complicated, costly as well as inconvenient solutions. Due to its high performance traction force, the 9660 T can load and press down silage without any problems. The driver can choose between three travel ranges and thus also select the maximum speed. It is very easy to change from one travel range to the next by pressing a button. Most of the work can be carried out in the large travel range, with a travelling speed of up to 40 km/h. Efficiency is a further important advantage. As the “SDCT” gearbox works highly efficient, fuel is turned into performance extremely economically. Especially in respect of the large travel range, the power is transmitted very directly, minimising the fuel consumption.

As from now the 9660 T will be equipped with a load-sensing hydraulic system. This very powerful hydraulic system will be able to carry out load cycles even faster, while saving fuel at the same time, as this system only releases oil, if requested by the working hydraulics. The 4-cylinder Deutz common rail turbo diesel engine with 115 kW (157 HP) also works very efficiently. A diesel oxidation catalyst and a particle filter support the exhaust gases to be purified in an environmentally friendly manner, irrespective of the conditions of use.



SCV cab for best all round view and comfort.
Deutz analysis system also included.

High capacity cooling system.
Easy maintenance!

4-cyl. Deutz Common Rail
diesel engine: Powerfull with 115 kW.

Oscillating rear axle for best stability. Optional suspension
for rear pendulum axle (lens tube elastomer).

Optional with
„SDCT”: 40 km/h and
high traction force

Schäffer



1-stage telescopic boom with undestroyable
Ferro-Form sliding elements.
Boom suspension as standard.

Fast operating Load Sensing working
hydraulics with 172 l/min at 220 bars.
Pressure independent flow sharing.



Heavy-Duty 28 t axles with multiple disc brakes
and automatic limited slip differentials.

SCHÄFFER LOADERS WITH THE „SCV“ CAB

The Schäffer SCV-cab (Silence/Comfort/View) fitted to the 6600, 8600 and 9600 series telescopic loaders, offers more comfort for longer working days. From the outside the cab shows dynamism and power. Access to the cab is very easy thanks to the safely positioned steps and the large dimensions of the doors. The interior design is lightly coloured giving a sense of even greater space and it's built to conform to the high quality standards typical of any Schaffer product.

The standard seat offers real comfort and many setting positions. If desired an air seat is also available as an option. The steering-wheel is adjustable in height and inclination. All operating elements and displays are arranged clearly and logically. All hydraulic functions can be controlled precisely using the joystick - this is facilitated by the use of preset valves. The arm-rest and joystick form a unit with the seat and maintain their position in relation to the operator whatever movement the seat makes. Perfect ergonomics! All drivers will like the rear window of the SCV-cab which can be opened to give better circulation of air.



AS STANDARD ON SCV CAB



Perfect upward view.
With roller blind



Storage box with cover



Battery switch



Power plug



Bottle holder



2 x Dual Power working lamp front,
1 x Single Power rear

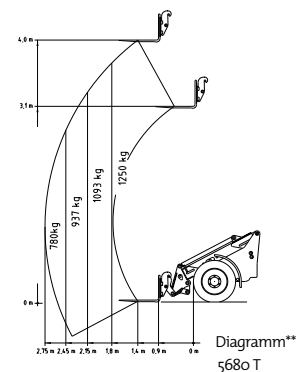
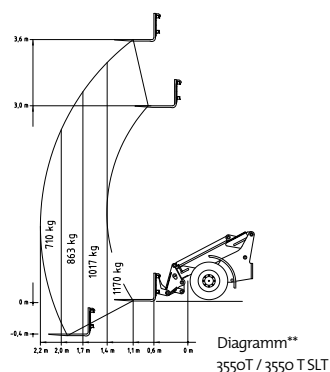
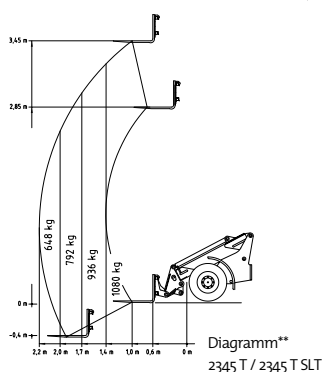


The arm-rest and joystick form a unit with the seat and maintain their position in relation to the operator whatever movement the seat makes. Perfect ergonomics!

TECHNICAL DATA

	2345 T	2345 T SLT	3550 T	3550 T SLT	5680 T
Engine	4 cyl. Kubota Turbo 33 kW (45 HP)	4 cyl. Kubota Turbo 33 kW (45 HP)	4 cyl. Kubota 37 kW (50 HP)	4 cyl. Kubota 37 kW (50 HP)	4 cyl. Deutz Turbo 55 kW (75 HP)
Driving hydraulics	Hydrostatic- automotive, HTF	Hydrostatic- automotive	Hydrostatic- automotive, HTF	Hydrostatic- automotive, HTF	Hydrostatic- automotive, HTF
Tyres	10.0/75 - 15.3 AS Option I 31x15.5-15	10.0/75 - 15.3 AS Option I 31x15.5-15	15.0/55 - 17 AS Option I 425/55 R17	15.0/55 - 17 AS Option I 425/55 R17	15.0/55 - 17 AS Option I 425/55 R17
Service brake	Combination Hydrostatic and multiple-disc	Combination Hydrostatic and multiple-disc	Combination Hydrostatic and multiple-disc	Combination Hydrostatic and multiple-disc	Combination Hydrostatic and multiple-disc
Parking brake	Multiple Disc in Oil Bath	Multiple Disc in Oil Bath	Multiple Disc in Oil Bath	Multiple Disc in Oil Bath	Multiple Disc in Oil Bath
Working hydraulics	Flow-Rate: from 42 l/min Working Pressure: 200 bar	Flow-Rate: from 42 l/min Working Pressure: 200 bar	Flow-Rate: from 52 l/min Working Pressure: 200 bar	Flow-Rate: from 52 l/min Working Pressure: 200 bar	Flow-Rate: from 64 l/min Working Pressure: 220 bar
Steering	Hydraulic Articulated Steering	Hydraulic Articulated Steering	Hydraulic Articulated Steering	Hydraulic Articulated Steering	Hydraulic Articulated Steering
Lifting capacity*	1.900 kg	1.900 kg	1.950 kg	1.950 kg	2.400 kg
Tip-over load, straight*	1.650 kg	1.650 kg	1.710 kg	1.710 kg	2.800 kg
Axes	Original Schäffer axles, 6 wheel nut rim; Option: planetary axle and automatic limited slip brake	Original Schäffer axles, 6 wheel nut rim; Option: planetary axle and automatic limited slip brake	Original Schäffer axles, 6 wheel nut rim; Option: planetary axle and automatic limited slip brake	Original Schäffer axles, 6 wheel nut rim; Option: planetary axle and automatic limited slip brake	Original Schäffer axles, 6 wheel nut rim; Option: planetary axle and automatic limited slip brake
Operating Weight	Protective roof: 2.850 kg cab: 3.050 kg	Protective roof: 2.900 kg	Protective roof: 3.700 kg cab: 3.900 kg	Protective roof: 3.700 kg	Protective roof: 4.300 kg cab: 4.500 kg
Speed	0 – 20 km/h, 2 speeds gear switching under load possible Option: 0 – 28 km/h	0 – 20 km/h, 2 speeds gear switching under load possible	0 – 20 km/h, 2 speeds gear switching under load possible Option: 0 – 28 km/h	0 – 20 km/h, 2 speeds gear switching under load possible Option: 0 – 28 km/h	0 – 20 km/h, 2 speeds gear switching under load possible Option: 0 – 30 km/h
Electrical system	Operating Voltage 12 V	Operating Voltage 12 V	Operating Voltage 12 V	Operating Voltage 12 V	Operating Voltage 12 V
Fluid capacities	Fuel: 40 l Hydraulic oil: 30 l	Fuel: 40 l Hydraulic oil: 30 l	Fuel: 55 l Hydraulic oil: 50 l	Fuel: 55 l Hydraulic oil: 50 l	Fuel: 85 l Hydraulic oil: 75 l

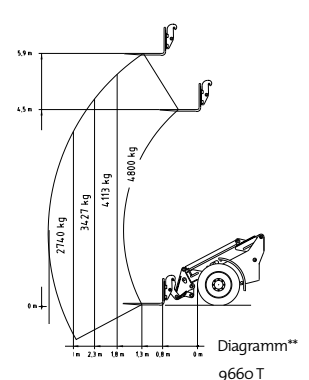
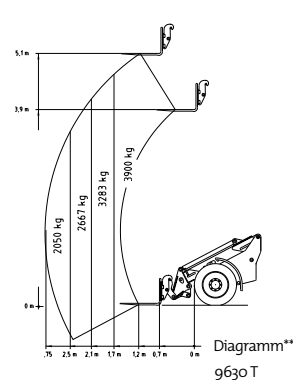
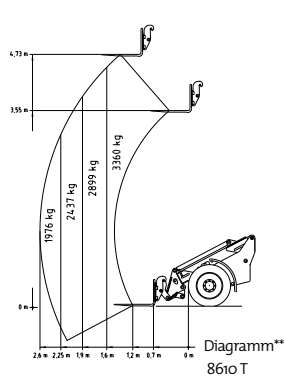
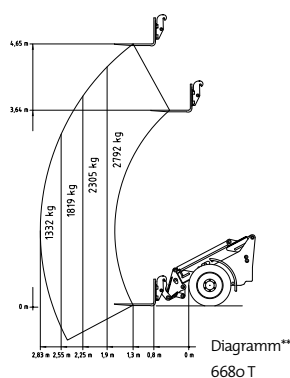
* Boom horizontal, not extended, with pallet fork (acc. to ISO 14397)



** Using forks on stable underground (according EN 474-3)

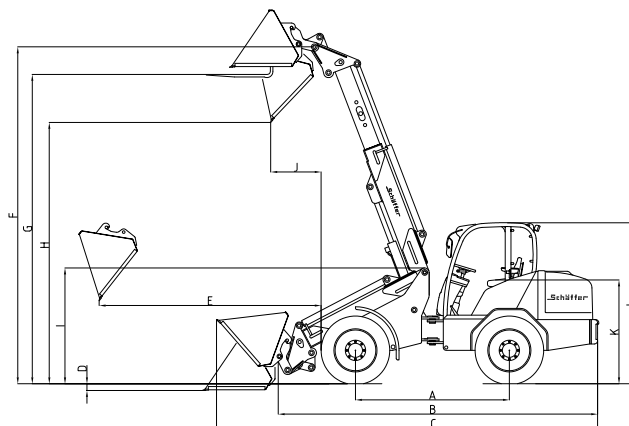
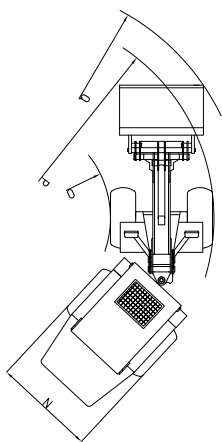
	6680 T	8610 T	9630 T	9660 T
Engine	4 cyl. Deutz Turbo 55 kW (75 HP)	4 cyl. Deutz Turbo Common Rail 75 kW (102 HP)	4 cyl. Deutz Turbo Common Rail 90 kW (123 HP)	4 cyl. Deutz Turbo Common Rail 115 kW (157 HP)
Driving hydraulics	Hydrostatic- automotive, HTF	Hydrostatic- automotive, HTF	Hydrostatic- automotive, HTF	Hydrostatic- automotive, HTF
Tyres	15.5/60-18 AS Option I 15.5/55-18 Option II 500/45-20	405/70-20 AS Option 550/45-22.5	18-22.5 TL Option I 600/40-22.5 Option II 500/60-22.5 Option III 600/50-22.5	500/70-24 AS Option I 600/55-26.5 Option II 700/50-26.5 Option III 650/55-26.5
Service brake	Combination Hydrostatic and multiple-disc	Combination Hydrostatic and multiple-disc	Combination Hydrostatic and multiple-disc	Combination Hydrostatic and multiple-disc
Parking brake	Multiple Disc in Oil Bath	Multiple Disc in Oil Bath	Multiple Disc in Oil Bath	Multiple Disc in Oil Bath
Working hydraulics	Flow-Rate: from 64 l/min Working Pressure: 220 bar	Flow Rate: from 105 l/min Working Pressure: 220 bar	Flow Rate: from 105 l/min Working Pressure: 220 bar	Flow Rate: from 172 l/min Working Pressure: 220 bar
Steering	Hydraulic Articulated Steering	Hydraulic Articulated Steering	Hydraulic Articulated Steering	Hydraulic Articulated Steering
Lifting capacity*	3.100 kg	3.800 kg	4.200 kg	5.300 kg
Tip-over load, straight*	3.800 kg	4.500 kg	5.000 kg	7.900 kg
Axles	DANA-axes, 8 wheel nut rim; Option: planetary axle and automatic limited slip brake	ZF HD-axes, 8 wheel nut rim; planetary axle and automatic limited slip brake, Oscilating rear axle	Dana-axes, 8 wheel nut rim; planetary axle and automatic limited slip brake, Oscilating rear axle	Dana-axes, 10 wheel nut rim; planetary axle and automatic limited slip brake, Oscilating rear axle
Operating Weight	cab: 5.600-6.300 kg	cab: 6.500-7.550 kg	cab: 8.000-9.300 kg	cab: 11.000-13.000 kg
Speed	0 – 20 km/h, 2 speeds gear switching under load possible Option: 0 – 35 km/h	0 – 20 km/h, 2 speeds gear switching under load possible Option: 0 – 35 km/h	0 – 20 km/h, 2 speeds gear switching under load possible Option: 0 – 35 km/h	0 – 30 km/h, 2 speeds gear switching under load possible Option: 0 – 40 km/h
Electrical system	Operating Voltage 12 V	Operating Voltage 12 V	Operating Voltage 12 V	Operating Voltage 12 V
Fluid capacities	Fuel: 95 l Hydraulic oil: 85 l	Fuel: 105 l Hydraulic oil: 94 l	Fuel: 140 l Hydraulic oil: 120 l	Fuel: 185 l Hydraulic oil: 170 l

* Boom horizontal, not extended, with pallet fork (acc. to ISO 14397)



** Using forks on stable underground (according EN 474-3)

DIMENSIONS



		2345 T	2345 T SLT	3550 T	3550 T SLT	5680 T
A	Axle base [mm]	1.850	1.910	1.920	1.920	1.960
B	Chassis length [mm]	4.100	4.200	4.070	4.070	4.350
C	Total length with standard bucket [mm]	4.520	4.580	4.835	4.835	5.200
D	Excavating depth [mm]	90	90	150	150	180
E	Max. working height [mm]	1.570	1.570	1.780	1.780	2.210
F	Max. bucket pivot point [mm]	3.750	3.750	3.850	3.850	4.250
G	Max. loading height with pallet fork [mm]	3.470	3.470	3.580	3.580	4.020
H	Max. load over height [mm]	3.010	3.010	3.150	3.150	3.330
I	Max. dump height [mm]	1.580	1.580	1.600	1.600	1.580
J	Dump range [mm]	820	820	890	890	1.160
K	Seat height [mm]	955	1.160	1.180	1.180	1.290
L	cab height [mm]	2.110	—	2.230	—	2.320
	Hardtop height [mm]	—	—	—	—	—
	Protection roof height [mm]	2.215	from 1.950	2.270	from 2.040	2.320
N	Total width [mm]	1.280-1.570	1.280-1.570	1.420-1.640	1.420-1.640	1.500-1.710
O	Track arc inside [mm]	950	980	1.230	1.230	1.580
P	Track arc outside [mm]	2.550	2.580	2.620	2.620	3.310
Q	External radius with standard bucket [mm]	2.850	2.880	2.970	2.970	3.820

* Option: High lift

** Option: Low cab





		6680 T	8610 T	9630 T	9660 T
A	Axle base [mm]	2.450	2.480	2.520	2.900
B	Chassis length [mm]	5.090	5.090	5.200	5.800
C	Total length with standard bucket [mm]	5.780	6.040	6.130	6.750
D	Excavating depth [mm]	100	120	130	80
E	Max. working height [mm]	2.360	2.550	2.970	3.300
F	Max. bucket pivot point [mm]	4.900	5.100	5.300	6.100
G	Max. loading height with pallet fork [mm]	4.650	4.770	5.100	5.900
H	Max. load over height [mm]	3.930	4.190	4.700	5.100
I	Max. dump height [mm]	1.700	1.780	1.850	2.190
J	Dump range [mm]	815	730	750	850
K	Seat height [mm]	1.420	1.510	1.600	1.880
L	cab height [mm]	2.430/2.530**	2.500/2.600***	2.740/2.640**	2.970
	Hardtop height [mm]	—	—	—	—
	Protection roof height [mm]	—	—	—	—
N	Total width [mm]	1.590-1.900	1.850-2.080	2.075-2.400	2.290-2.490
O	Track arc inside [mm]	1.750	2.240	2.240	2.400
P	Track arc outside [mm]	3.360	4.350	3.900	4.200
Q	External radius with standard bucket [mm]	4.000	3.650	4.430	4.650

* Option: High lift ** Option: Low cab *** Option: High cab

All technical specifications in this brochures refer to serial models and describe their standard functions. Tipping loads and parallel motion are not guarantee when using a foreign headstock. The equipment components and their functions as well as the accessories depend on the individual model and the product options and also on the country and customer specific requirements. Images may contain products or equipment components which are not mentioned or cannot be obtained as a standard. The descriptions, measurements, images, weight specifications and technical data correspond to the state of the art at the time of printing and are non-binding.

We reserve changes in the field of construction, equipment, optics and technology without prior notice, due to the continuous development of the products. In case of doubts concerning the performance or the mode of operation of our products due to special circumstances, we recommend the execution of work samples under controlled conditions. We cannot exclude deviations from images or measurements, calculation errors, printing errors or incompleteness in the brochures despite all due care. We do therefore not accept any liability for the correctness and completeness of the specifications in this brochures. We do guarantee the proper functioning of our products within the scope of our General Terms and Conditions. Any guarantees that go beyond these are on principle not provided. Any liability beyond the ones set out in our General Terms and Conditions is excluded.



The way Schäffer loaders are developed, built and serviced is unique. The difference is our 50 years of experience. First, we think about the operator; we want to make their work safer, more comfortable – and more profitable. To this end, we are equipped with the most modern development and production technologies at our plant in Erwitte, Germany. Ultimately, it is our associates who work with our customers to continuously develop new solutions. Long years of commitment to the company combined with an enduring spirit of innovation are the basis of our exceptional worldwide success.

The name Schäffer Loaders stands for more than one-of-a-kind product quality. It also stands for safety and optimal service, which we guarantee not only in Germany but around the globe.

The purchase of a Schäffer loader is the beginning of a long-term relationship. Only original replacement parts allow your machine to remain a 100% true Schäffer over the years. Only then will it guarantee the reliability you rightly expect. We offer you and our service partners a 24 hour delivery service – 7 days a week, 365 days a year.

made by SCHÄFFER

Schäffer offers you a product line-up of over 40 different models, each of which can be adapted to your individual requirements. Our loaders can be used in many different industries: in agriculture or construction, in horticulture or landscaping, in industry and trade, in equestrian or warehousing. Whatever the industry, Schäffer should always be your first choice.



Your Dealer:

Schäffer

SCHÄFFER MASCHINENFABRIK GMBH
Postfach 10 67 | D-59591 Erwitte
Phone +49 02943 9709-0
Fax +49 02943 9709-50
info@schaeffer-lader.de
www.schaeffer-lader.de